



Surgeon Scrub-Up Pedal Valve

Model No: 54T5400A

COMPLIES WITH:

- CSA certified
- Complies to ASME Standard A112.18.1/CSA B125.1
- For commercial use only
- Outlet option 2, 3, 4 and 7 are EPA WaterSense listed
- Verified compliant with 0.25% weighted average Pb content regulations
- (Contact Delta Representative for State and/or Local Approvals)



SPECIFICATION:

- Foot Pedal Mixing Valve
- Outlet: No Outlet
- No Spout-Valve only
- Forged brass floormount self close foot pedal valve
- Two indexed pedals
- Polished chrome plate finish
- No stops

OPERATION:

- Not Available

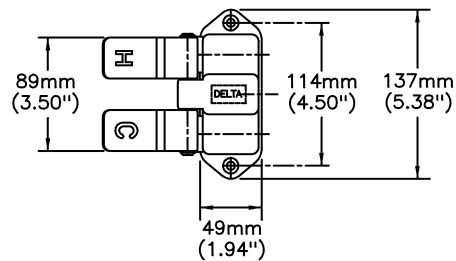
(Dimensional drawing on following page)

Delta reserves the right (1) to make changes to specifications and materials, and (2) to change or discontinue models, both without notice or obligation. Dimensions are for reference. Measurement may vary plus or minus 6mm(0.25"). Mounting locations are suggested only. Check with local codes for requirements in your area. This spec was produced April 15, 2021.

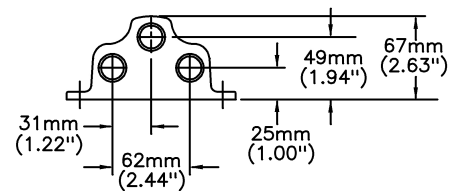
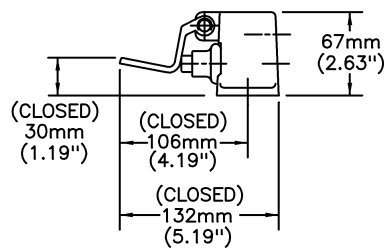
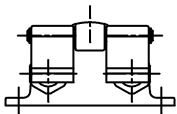
Delta Faucet Company - 55 East 111th St. - Indianapolis, Indiana, USA 46280 - (317) 848-1812
Delta Faucet Canada - 395 Matheson Blvd E - Mississauga, Ontario, Canada L4Z 2H2 - (905) 712-3030

Model No: 54T5400A

FINISH:
 BODY - BRASS, POLISHED CHROME PLATED
 PEDALS - BRASS, CHROME PLATED
INCLUDES:
 TWO - No. 12 WOODSCREWS 1 1/2" LONG



TOP VIEW



1/2" FIP
 INLETS & OUTLETS
 (BACK VIEW)

Delta reserves the right (1) to make changes to specifications and materials, and (2) to change or discontinue models, both without notice or obligation. Dimensions are for reference. Measurement may vary plus or minus 6mm(0.25"). Mounting locations are suggested only. Check with local codes for requirements in your area. This spec was produced April 15, 2021.

Delta Faucet Company - 55 East 111th St. - Indianapolis, Indiana, USA 46280 - (317) 848-1812
 Delta Faucet Canada - 395 Matheson Blvd E - Mississauga, Ontario, Canada L4Z 2H2 - (905) 712-3030